

Solar Development Mapping Group Update

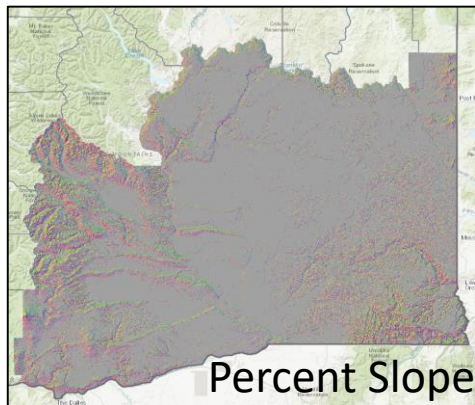
Presented by Kate Brouns, Washington Policy Manager - Renewable Northwest

Goal: Produce a map that illustrates the relative suitability of lands for utility scale solar development based on general, mappable criteria.

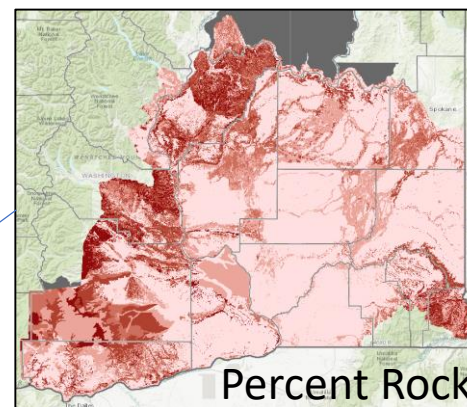


Solar Development Suitability

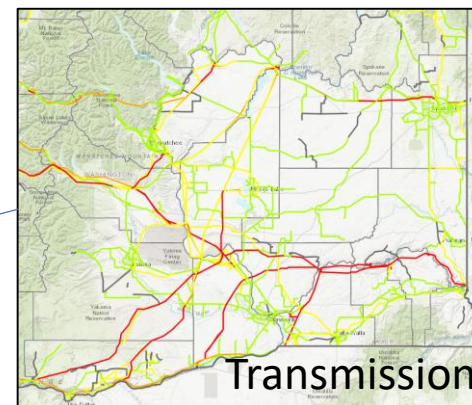
General Model Assessment Criteria



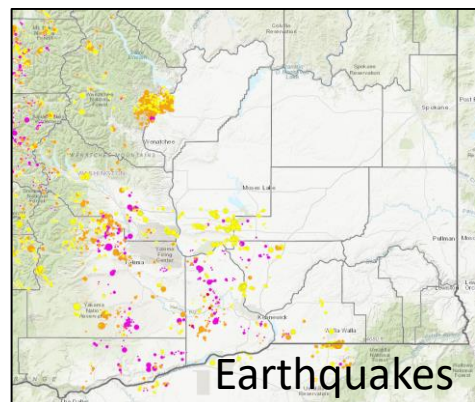
Substrate



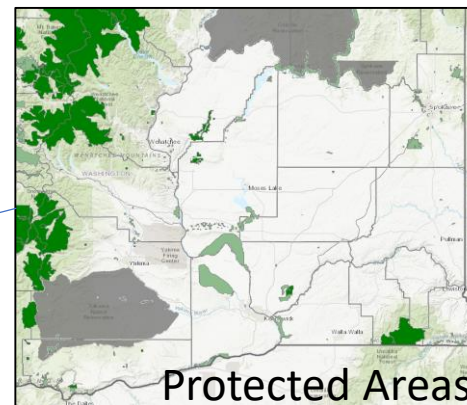
Slope



Proximity to Infrastructure



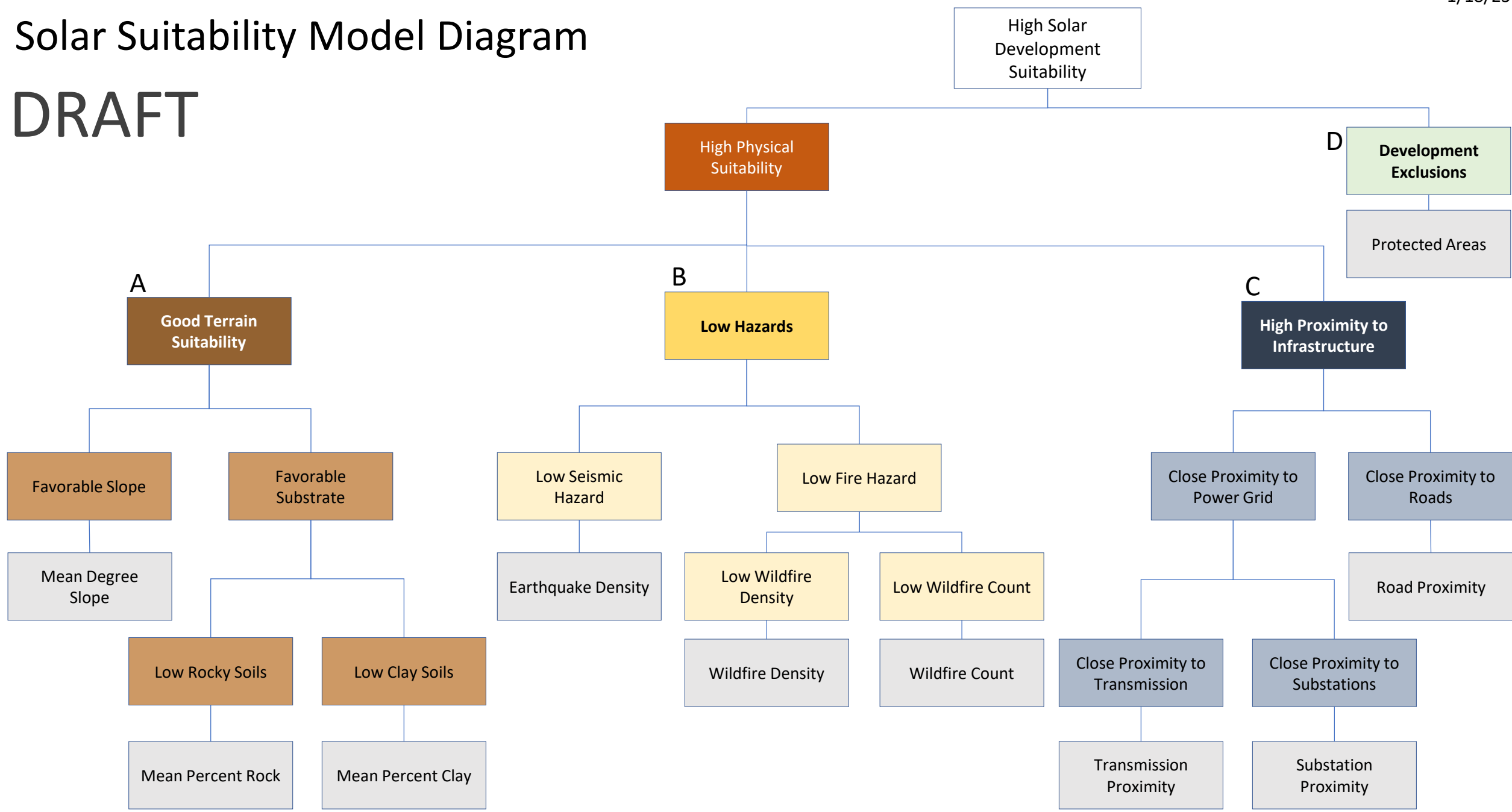
Potential Hazards



Categorical Exclusions

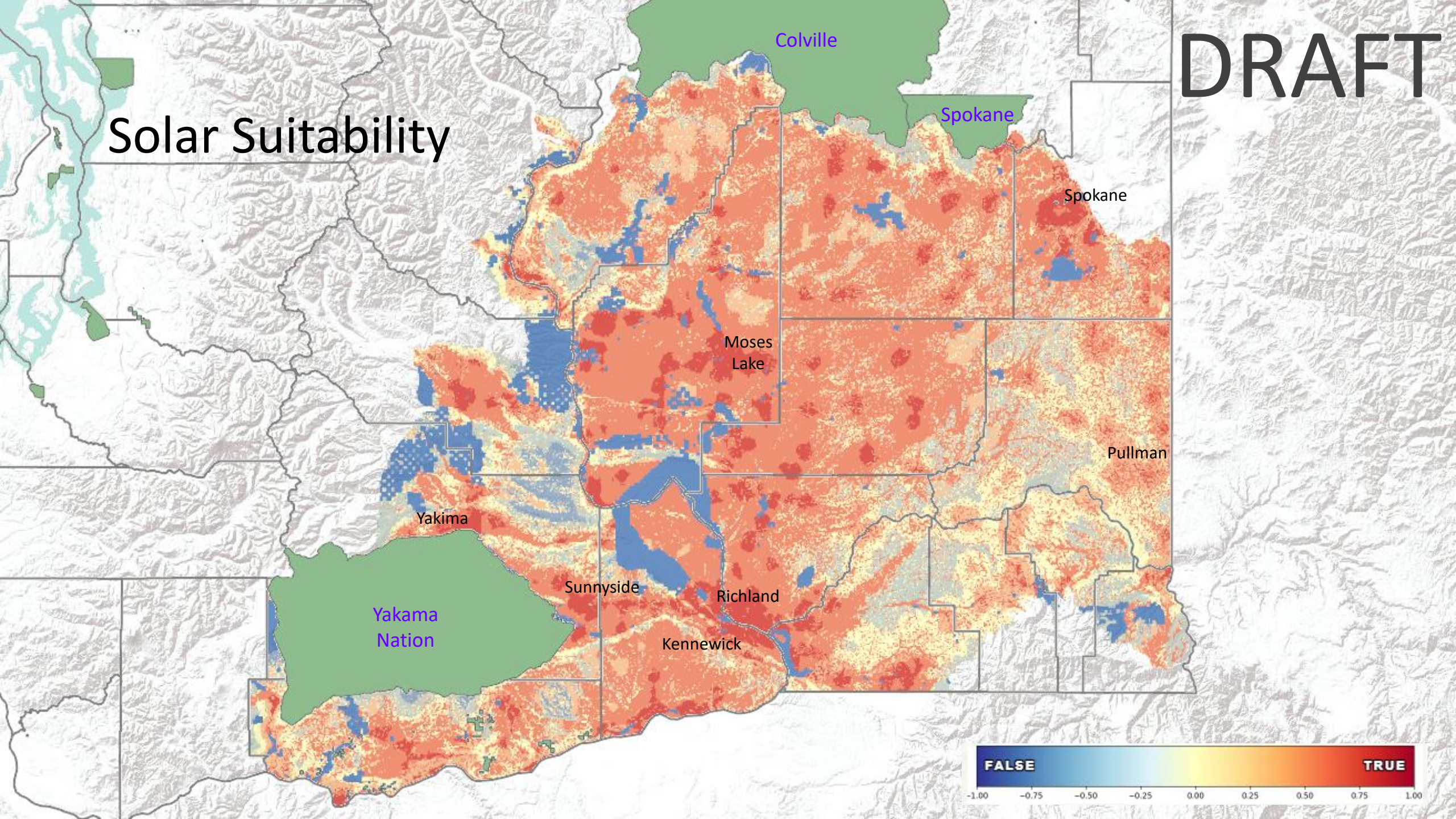
Solar Suitability Model Diagram

DRAFT



DRAFT

Solar Suitability



Colville

Spokane

Spokane

Moses
Lake

Pullman

Yakima

Yakama
Nation

Sunnyside

Richland

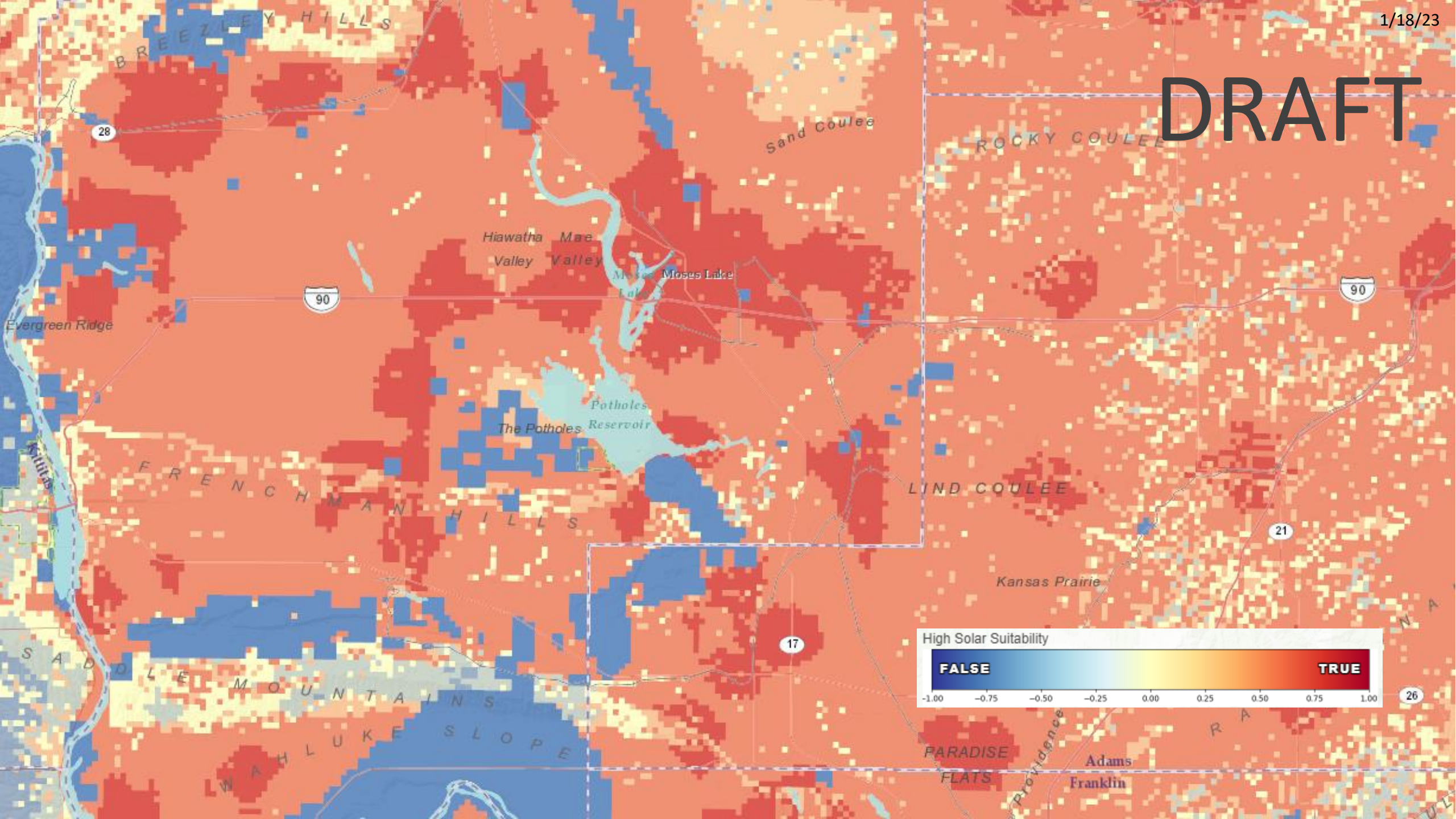
Kennewick

FALSE

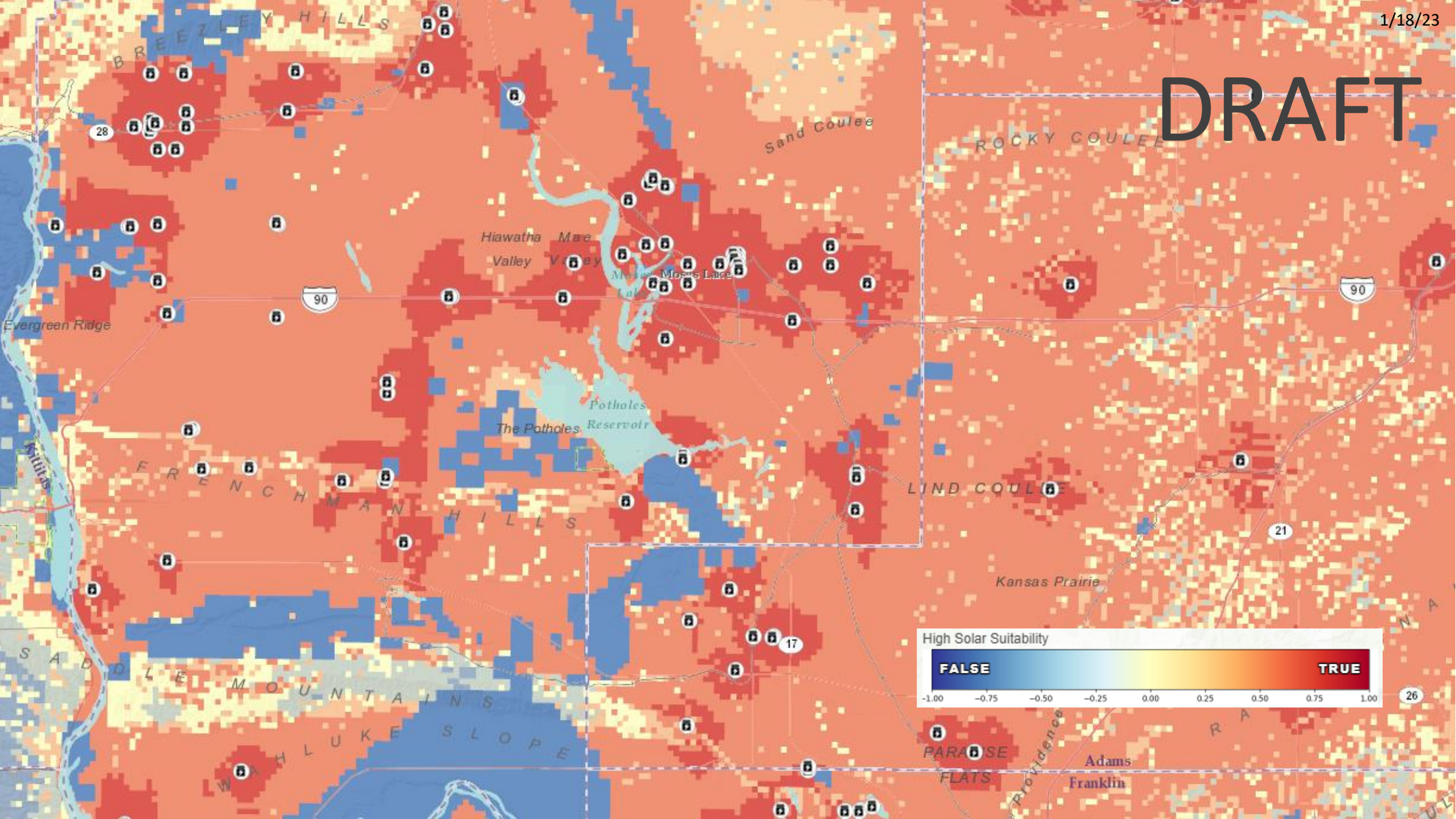
TRUE

-1.00 -0.75 -0.50 -0.25 0.00 0.25 0.50 0.75 1.00

DRAFT



DRAFT



Other Factors of Interest

- Environmental Constraints/Concerns
- Department of Defense Concerns
- Tribal Interests
- Socioeconomic Considerations



Next Steps

- Share with colleagues and others for review and comment
- Make model diagram refinements
 - Include additional spatial datasets (e.g., water & wetlands)
 - Evaluate model threshold and weight settings

